

## Apartment 15

Second Floor

Lounge/Dining	4.855m* x 12.325m	15'11"* x 40'5"
Kitchen	2.250m x 3.285m	7'5" x 10'9"
Cloaks	1.950m x 1.825m	6'5" x 6'0"

Third Floor

Bedroom 1	5.657m* x 10.945m	18'7"* x 35'11"
En-Suite 1	4.931m x 2.038m	16'2" x 6'8"
Bedroom 2	4.754m* x 6.557m	15'7"* x 21'6"
En-Suite 2	2.100m x 1.950m	6'11" x 6'5"

## Apartment 16

Lounge	5.643m x 4.327m	18'6" x 14'2"
Dining	3.300m x 2.745m	10'10" x 9'0"
Kitchen	3.225m* x 2.400m*	10'7"* x 7'11"*
Bedroom 1	3.775m x 4.327m	12'4" x 14'2"
En-Suite	2.500m x 1.450m	8'2" x 4'9"
Bedroom 2	2.562m x 4.327m	8'5" x 14'2"
Bathroom	2.200m x 1.950m	7'3" x 6'5"

## Apartment 17

Second Floor

Lounge/Dining	4.020m* x 7.962m	13'2"* x 26'2"
Kitchen	2.283m x 3.037m	7'6" x 10'0"
Cloaks	1.787m x 1.200m	5'10" x 4'0"

Third Floor

Bedroom 1	5.927m x 6.620m	19'5" x 21'9"
Dressing Area	3.343m x 4.545m	11'0" x 14'11"
En-Suite	3.268m x 2.000m	10'8" x 6'6"
Bedroom 2	3.728m x 6.952m	12'3" x 22'10"
Bedroom 3	3.815m x 5.466m	12'6" x 17'11"
Bathroom	1.737m x 2.100m	5'8" x 6'11"

## Apartment 18

Second Floor

Lounge	6.690m x 3.697m	21'11" x 12'1"
Dining	4.890m x 2.475m	16'0" x 8'1"
Kitchen	3.000m x 2.475m	9'10" x 8'1"
Cloaks	1.725m x 1.200m	5'8" x 4'0"
Bedroom 3	2.908m x 4.150m	9'6" x 13'7"

Third Floor

Bedroom 1	4.896m x 6.317m*	16'0" x 20'9"*
En-Suite	2.013m x 3.243m	6'7" x 10'8"
Bedroom 2	4.184m* x 7.367m	13'8"* x 24'2"
Bathroom	2.250m x 1.714m	7'5" x 5'7"

## Apartment 19

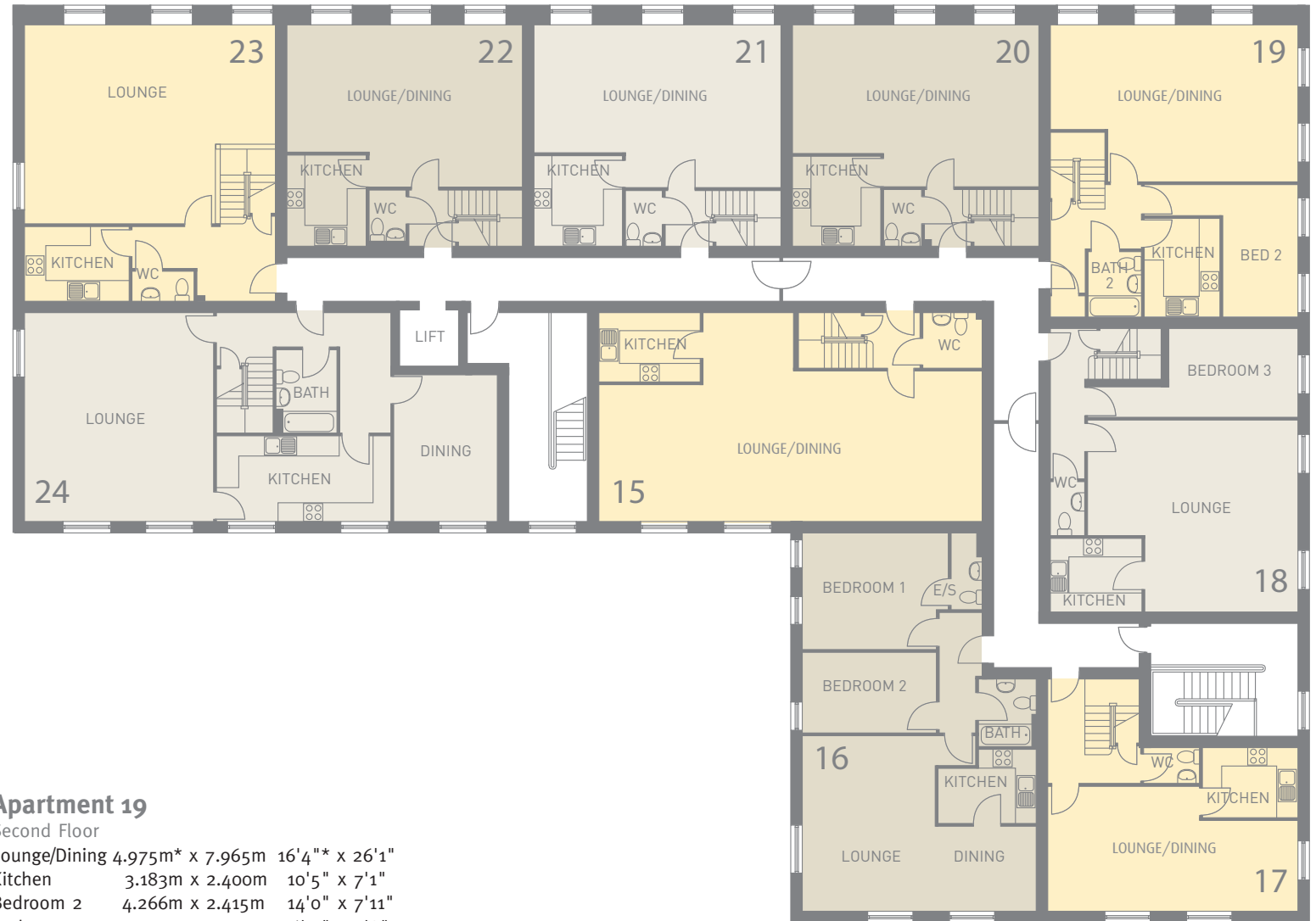
Second Floor

Lounge/Dining	4.975m* x 7.965m	16'4"* x 26'1"
Kitchen	3.183m x 2.400m	10'5" x 7'1"
Bedroom 2	4.266m x 2.415m	14'0" x 7'11"
Bathroom 2	2.100m x 1.725m	6'11" x 5'8"

Third Floor

Bedroom 1	6.867m x 8.218m	22'6" x 26'11"
Bathroom 1	2.012m x 3.243m	6'7" x 11'0"

\* maximum dimensions



### Apartment 20

Second Floor

Lounge	4.978m* x 5.157m	16'4"* x 16'11"
Dining	2.954m x 4.099m	9'8" x 13'5"
Kitchen	2.863m x 2.883m	9'5" x 9'5"
Cloaks	1.233m x 1.800m	4'0" x 5'11"

Third Floor

Bedroom 1	4.704m x 4.634m	15'5" x 15'2"
Dressing	2.102m x 3.100m	6'11" x 10'2"
En-Suite	1.725m x 3.025m	5'8" x 9'11"
Bedroom 2	3.153m* x 4.084m	10'4"* x 13'5"
Bathroom	1.675m x 2.763m	5'6" x 9'1"

### Apartment 21

Second Floor

Lounge	4.995m* x 5.157m	16'5"* x 16'11"
Dining	2.938m x 4.099m	9'8" x 13'5"
Kitchen	2.883m x 2.863m	9'5" x 9'5"
Cloaks	1.233m x 1.800m	4'0" x 5'11"

Third Floor

Bedroom 1	4.705m x 4.821m	15'5" x 15'10"
Dressing Area	2.233m x 2.913m	7'4" x 9'7"
En-Suite	2.874m* x 2.838m	9'5" x 9'4"
Bedroom 2	3.153m* x 4.084m	10'4"* x 13'5"
Bathroom	2.675m x 1.688m	8'9" x 5'6"

### Apartment 22

Second Floor

Lounge	4.995m* x 5.157m	16'5"* x 16'11"
Dining	2.654m x 4.099m	8'8" x 13'5"
Kitchen	2.883m x 2.579m	9'5" x 8'5"
Cloaks	1.233m x 1.800m	4'0" x 5'11"

Third Floor

Bedroom 1	4.421m x 4.821m	14'6" x 15'10"
Dressing	1.949m x 2.913m	6'4" x 9'7"
En-Suite	2.862m* x 2.838m	9'5"* x 9'4"
Bedroom 2	3.153m* x 4.084m	10'4"* x 13'5"
Bathroom	2.688m x 1.688m	8'10" x 5'6"

### Apartment 23

Second Floor

Lounge	3.803m x 8.045m	12'6" x 26'5"
Kitchen	2.438m x 3.365m	8'2" x 11'0"
Dining	2.515m x 6.145m	8'3" x 20'2"
Cloaks	1.000m x 2.000m	3'3" x 6'6"

Third Floor

Bedroom 1	5.710m x 4.001m	18'9" x 13'1"
Dressing Area	2.438m x 2.024m	8'0" x 6'8"
En-Suite	3.057m x 1.949m	10'0" x 6'5"
Bedroom 2	3.970m* x 4.434m	13'0"* x 14'6"
Bathroom	1.950m x 2.400m	6'5" x 7'11"

### Apartment 24

Second Floor

Lounge	6.047m x 6.755m	19'10" x 22'2"
Dining	4.625m x 3.321m	15'2" x 10'11"
Kitchen	2.765m x 5.590m	9'1" x 18'4"
Bathroom	1.950m x 2.652m	6'5" x 8'8"

Third Floor

Bedroom 1	5.657m* x 7.278m	18'7"* x 23'10"
En-Suite 1	2.038m x 3.500m	6'8" x 11'6"
Bedroom 2	5.657m* x 7.934m	18'7"* x 26'0"
En-Suite 2	2.038m x 3.140m	6'8" x 10'4"

\* maximum dimensions  
minimum dimensions

